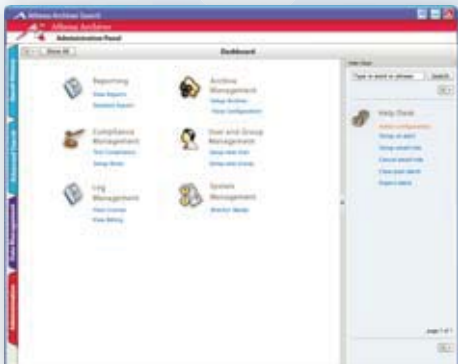


Search View



Dashboard View



Report View



FEATURES: Athena Archiver features many cutting edge features that raises it above the competition. Some of these notable features include:

- **Flash 9 interface:** Athena Archiver now contains a next-gen dynamic web interface that is cross-browser and cross-platform compatible.
- **Lightning Fast Speed:** The Athena Archiver search client can parse 10,000 emails in under .4 seconds. This includes full text searching across header, message body, and the most common attachment types (pdf, exe, doc, txt, and more.)
- **Easy Integration:** Integrates flawlessly with all common mail servers including MS Exchange® Server, Novell GroupWise®, Postfix®, and Sendmail®.
- **Solid Security and Encryption:** Athena Archiver is user and pass-phrase protected making sure your information is always secure.
- **Easy and Intuitive:** Athena was built from the ground up to be intuitive and easy to use. Using Athena requires very little initial training and the administration panel contains a feature contextual help window called Help Desk, that can guide you every step of the way.
- **Highly Scalable:** Growing company? Athena Archiver is there for you. Athena Archiver is highly scalable even across multiple servers and dispersed geographical locations
- **Stunning Reports:** Athena Archiver comes with 25 pre-made reports and the ability to customize your own reports, setup recurring reports, alerts, too!

MORE INFO: For more information visit us at athenaarchiver.com, call us at 212-868-9885, or send us an email at sales@athenaarchiver.com

REQUIREMENTS: Athena Archiver's minimum requirements are a pentium-based PC or compatible computer with at least 64mb of ram, Windows® 2000/XP, and a connection to the email server. Flash 7 or greater plugin is also required for using the optional web interface.